



FROM 2014 TILL PRESENT

Ford Transit Courier



BEFORE PROCEEDING, PLEASE CHECK THE PRODUCT TECHNICAL INFORMATION

REAR DOOR



Remove the paneling of the two doors of the rear door. Apply the drilling template. In particular, the longitudinal axis of the shell is 48 cm from the lower edge of the door. Align the vertical axis (dash line) with the edge of the tailgate. Mark the 9 mm holes.*



Be careful when drilling to avoid damaging the standard lock inside the door. **Proceed with the steps according to the generic installation procedure.**

SIDE DOOR

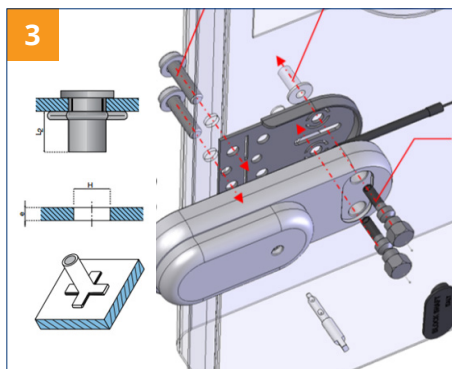


Remove the side door and side panel paneling. Apply the drilling template. In particular the longitudinal axis of the shell at 13 cm from the sliding guide seat. Mark the 9 mm holes.* Combine the counterplate with a rod / slab (with a thickness of less than 3 mm) in steel or plastic, using gummed paper (or other adhesive tape) to have good handling and stiffness.

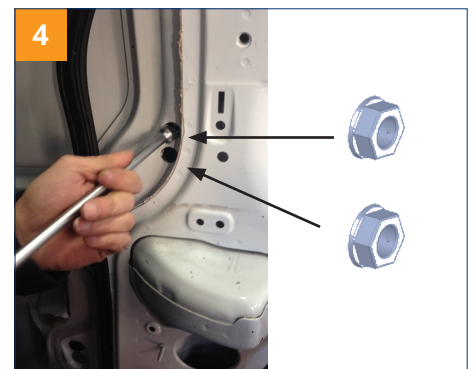
SIDE DOOR



Insert the counterplate from the side up to the position and using the template from the outside (using the 9 holes made) center the counterplate and tighten. Take care to avoid detaching the counterplate from the drive rod before fixing.



For fixing the armor:
Fixing with Plusnut (steel rivet) and antiburglar pin to be applied from the outside.



Fixing with nuts and without counterplate:
From the outside, make 6 holes so that they can then be centered from the inside and widen with a hole cutter and create access for the M8 nut and the socket wrench. In this case the seal is guaranteed only by the head of the nut. **Proceed with the steps according to the generic installation procedure.**

*Pay attention to the holes on the extreme edge; before drilling, make sure that the head of the M8 pin is contained in the edge. Pay attention to the hole for the passage of the emergency cable: pierce only the external sheet to allow the insertion of the cable in the door.