



FROM 2018 TILL PRESENT

Peugeot Partner  
 Citroën Berlingo  
 Opel Combo E  
 Toyota ProAce City

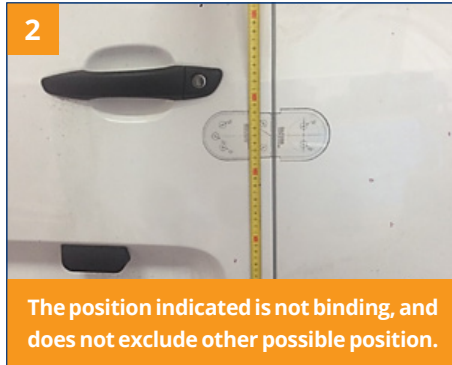


BEFORE PROCEEDING, PLEASE CHECK THE PRODUCT TECHNICAL INFORMATION

REAR DOOR



Remove the paneling of the two doors of the rear door. Apply the drilling template.



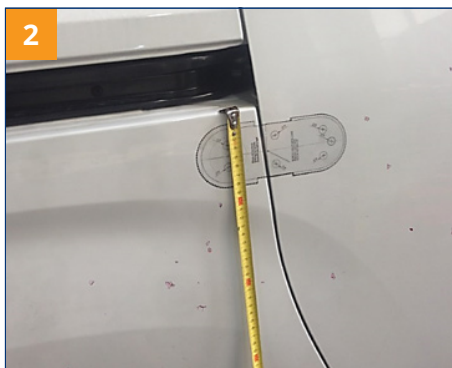
The position indicated is not binding, and does not exclude other possible position.

In particular, the longitudinal axis of the lock is 45 cm from the lower edge of the door. Align the vertical axis (dash line) with the edge of the tailgate. Mark the 9mm holes.\*  
**Proceed with the steps according to the generic installation procedure.**

SIDE DOOR



Remove the side door and side panel paneling. It is not necessary to completely detach the panel (which is stuck under the floor). The door panel has two screws (up and down) while the rest has quick fasteners. Apply the drilling template.



In particular, the longitudinal axis of the shell at 5cm from the edge of the sliding guide seat (see photo detail). Align the vertical axis (dash line) with the edge of the tailgate. Mark the 9mm holes.\*  
**Proceed with the steps according to the generic installation procedure.**

\*Pay attention to the holes on the extreme edge; before drilling, make sure that the head of the M8 pin is contained in the edge. Pay attention to the hole for the passage of the emergency cable: pierce only the external sheet to allow the insertion of the cable in the door.