

2016-PRESENT
 Citroën Jumpy
 Peugeot Expert
 Toyota ProAce

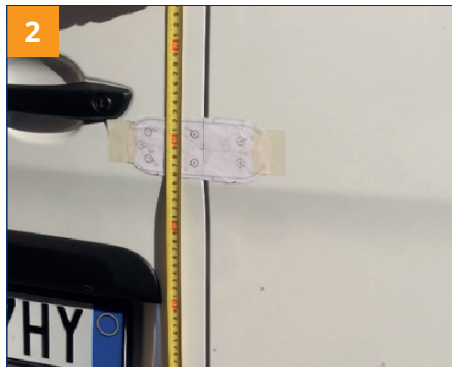


2019-PRESENT
 Opel Vivaro

2022-PRESENT
 Fiat Scudo

READ THE GENERAL INSTALLATION PROCEDURE CAREFULLY BEFORE PROCEEDING WITH THE SPECIFICATIONS

REAR DOORS



Remove the paneling of the two doors of the rear door. Apply the drilling template. The longitudinal axis of the armor is 59 cm from the lower edge of the door. Align the vertical axis (dash line) with the edge of the tailgate. Mark the 9 mm holes.

Pay attention to the holes on the extreme edge; before drilling, make sure that the head of the M8 pin is contained in the edge. Pay attention to the hole for the passage of the emergency cable: pierce only the external sheet to allow the insertion of the cable in the door.

SIDE DOOR



Remove the side paneling and the sliding door. The longitudinal axis of the shell is 26.5 cm from the edge of the sliding guide seat. Align the vertical axis (dash line) with the edge of the tailgate. Mark the 9 mm holes.

Pay attention to the holes on the extreme edge; before drilling, make sure that the head of the M8 pin is contained in the edge. Pay attention to the hole for the passage of the emergency cable: pierce only the external sheet to allow the insertion of the cable in the door. **Proceed with the steps according to the GENERIC INSTALLATION PROCEDURE.**